



**Wentworth Estate, Virginia Water**

**£7,500 Per calendar month**

**BUCKINGHAMS**



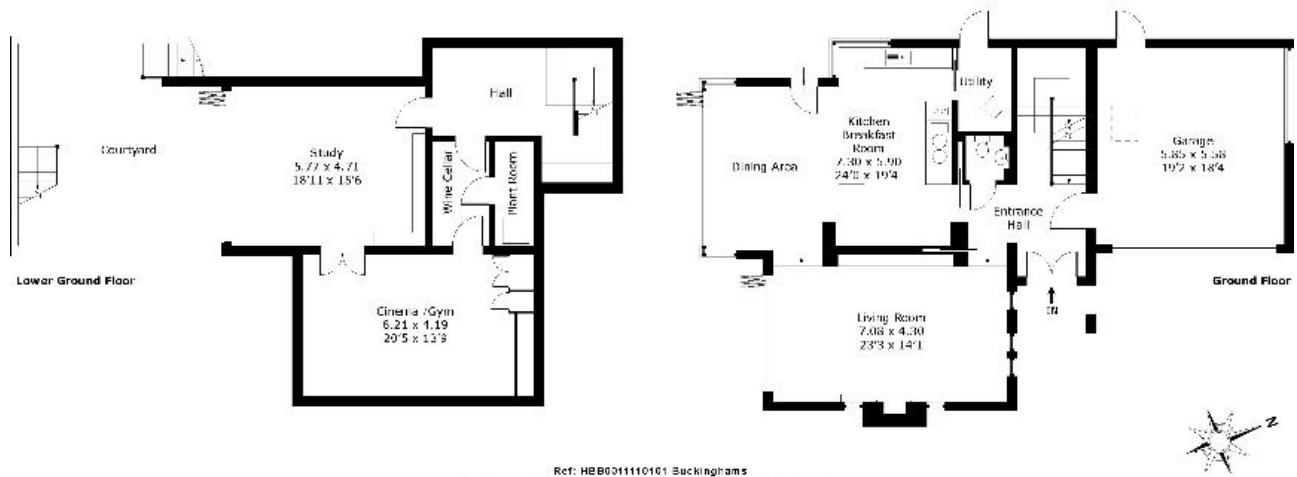
**A truly unique contemporary residence offering bright and spacious accommodation over four floors occupying an attractive plot approaching a third of an acre on the Wentworth Estate. Unfurnished. Council Tax Band H. EPC:C82.**

Fees for tenants: Holding fee equivalent to one weeks rent, amendments to Tenancy Agreement after the document has been signed £50, change of sharer £50, stamp duty land tax (if total rent exceeds £125,000), 3% above the base rate of Bank of England per annum (calculated daily) for late/unpaid/returned rent payments, lost/damaged/broken keys/fobs or security devices at cost, deposit of five weeks rent if annual rent is less than £50,000 or six weeks rent if annual rent is £50,000 or more, all including VAT.

**High Beeches, Pipers End, Wentworth Estate**

**Approximate Gross Internal Floor Area :**

Lower Ground Floor	86 sq m / 926 sq ft
Ground Floor	131 sq m / 1410 sq ft
First Floor	90 sq m / 969 sq ft
Second Floor	48 sq m / 517 sq ft
<b>Total</b>	<b>355 sq m / 3822 sq ft</b>



Ref: HBB031110161 Buckingham  
 HPI ©2010 Tel: 07814 36 77 21 [info@landshorimagi.com](mailto:info@landshorimagi.com)  
 Not to Scale. Any Areas, measurements or distances given are maximum and approximate only, no decisions w/out checking should be made when reliant upon them.

6 Station Approach Virginia Water Surrey GU25 4DL  
 01344 845050  
[www.buckingham.com](http://www.buckingham.com)  
[lettings@buckingham.com](mailto:lettings@buckingham.com)

