



Websters  
estate agents

# Beaumont Place, Isleworth, TW7 7LB

Ground and First Floor 3 bedroom Maisonette in a modern style development with an allocated parking space, a garage, private garden and a newly extended lease of 988 years. Situated in a quiet residential cul-de-sac just 0.2 miles from local shops, 0.4 miles from bus stops and within 0.7 miles of the A316 with direct access to the M3/M25 and central London.

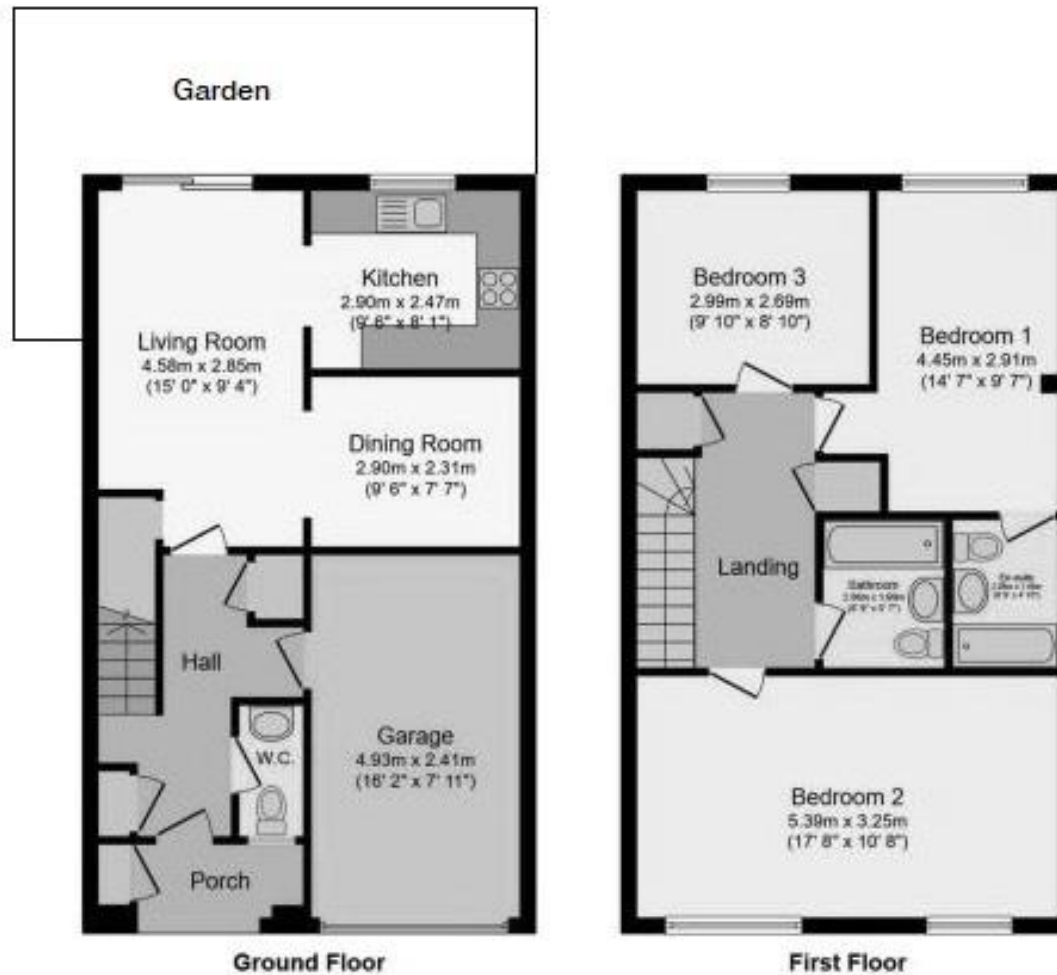
Tastefully presented to offer 1267 sq ft of living space (including the garage) over 2 floors with high specification fixtures and fittings, oak flooring downstairs, recently installed kitchen, bathroom, en-suite and downstairs w.c and large double glazed windows and doors.

Front door in the porch opens to the hallway with built in storage, access to the garage with power and lighting and doors to the w.c and the open plan living room at the rear. This spacious room has seating and dining areas, a stylish integrated kitchen and sliding doors opening onto the low maintenance garden with mature planting and adequate space for a table and chairs and storage.

Located 0.7 miles from Redlees Park and Leisure centre and within 0.8 miles of Chase Bridge, Ivybridge, Worplesdon and The Richmond upon Thames Schools. EPC Band C

- Ground and First Floor Maisonette
- 3 Bedrooms and 2 Bathrooms
- Garage, Allocated Parking and Garden
- Newly Extended 988 Year Lease
- 1267 Sq Ft of Living Space (inc Garage)
- Within 0.4 Miles of Shops and Bus Stops
- Less than 0.7 Miles from Popular Schools





Total Floor area approx 117.7 sq m (1267 sq ft)  
including garage

a Websters Estate Agents 164 Heath Road, Twickenham, Middlesex TW1 4BN t 020 8892 3343 e sales@mywebsters.co.uk w mywebsters.co.uk

Disclaimer  
These particulars, whilst believed to be accurate are set out as a general outline only for guidance and do not constitute any part of an offer or contract. Intending purchasers should not rely on them as statements of representation of fact, but must satisfy themselves by inspection or otherwise as to their accuracy. We have not carried out a detailed survey nor tested the services, appliances and specific fittings. Room sizes should not be relied upon for carpets and furnishings. The measurements given are approximate. No person in this firm's employment has the authority to make or give any representation or warranty in respect of the property.

