



Websters
estate agents

Lion Road, Twickenham, TW1 4JF

Mid Terrace 3 double bedroom Victorian home with a mature 63ft garden. Situated in a popular residential location just 0.2 miles from Twickenham Green, shops, cafes and restaurants. Situated within 0.4 miles of Archdeacon, TPA and St Richard Reynolds and less than 0.9 miles from Trafalgar, St James's and Waldegrave Girls/Co-ed Sixth Form.

Extended at the rear and recently loft converted to offer 1122 sq ft of well proportioned living space over 3 floors with high specification fixtures, fittings and floorings, energy efficient heating, lighting and appliances, built in storage, stylish contemporary decor throughout and potential to add a home office in the garden and further extend at the rear (subject to Planning Permission and Building Regulations)

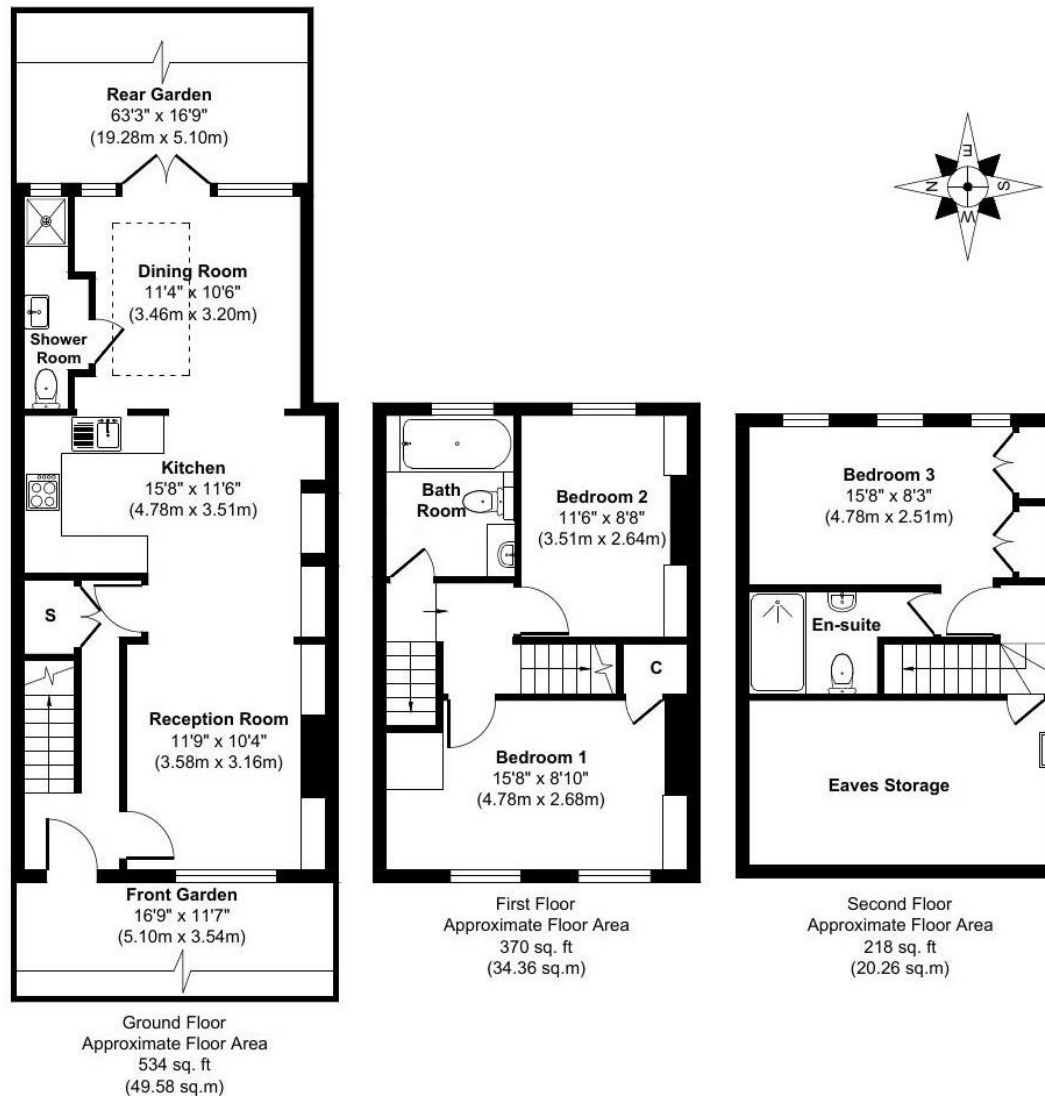
Entrance hallway leads to the open plan living space with the sitting room at the front and the stylish fitted kitchen and family area at the rear. This light filled room has a large roof lantern, space for dining/seating and access to the utility/w.c. Double doors open onto the garden with a patio, lawn, mature planting and shed storage. On the first floor are 2 double bedrooms, the luxury family bathroom and stairs upto the main bedroom with an en-suite shower room and access to extensive eaves storage.

Located 0.6 miles from Twickenham town centre and train station, Strawberry Hill station, Church Street shops, restaurants and Twickenham Riverside with a towpath walk past Marble Hill Park to Richmond upon Thames
EPC Rating C

- Mid Terrace Victorian Home
- 3 Bedrooms and 2 Bathrooms
- 63 Ft Rear Garden
- 1122 Sq Ft of Living Space over 3 Floors
- High Specification Throughout
- 0.2 Miles from Twickenham Green
- Close to Numerous Popular Schools



Lion Road, TW1



Approx. Gross Internal Floor Area 1122 sq. ft / 104.20 sq. m

a Websters Estate Agents 36 Broad Street, Teddington, Middlesex TW11 8QY t 020 8614 6000 e sales@mywebsters.co.uk w mywebsters.co.uk

Disclaimer

These particulars, whilst believed to be accurate are set out as a general outline only for guidance and do not constitute any part of an offer or contract. Intending purchasers should not rely on them as statements of representation of fact, but must satisfy themselves by inspection or otherwise as to their accuracy. We have not carried out a detailed survey nor tested the services, appliances and specific fittings. Room sizes should not be relied upon for carpets and furnishings. The measurements given are approximate. No person in this firm's employment has the authority to make or give any representation or warranty in respect of the property.

