



38

34

32

Websters
estate agents

Norcutt Road, Twickenham, TW2 6SR

Mid Terrace 2 double bedroom Victorian family home in a popular residential area just 0.2 miles from Twickenham Green, local shops, cafes and restaurants and only 0.7 miles from Strawberry Hill and Twickenham mainline train stations.

Extended at the rear on the ground and first floor to offer 698sq ft of well balanced living space over 2 floors with high specification fixtures, fittings and floorings, period features, double glazed sash style windows, built in storage, neutral decor and LBRUT approval from 2021 to further extend and loft convert (application 20/3194/PS192)

Front door opens into the living room with access to the family/dining room and the kitchen at the rear. This light filled room has stylish fitted units and a door onto the low maintenance garden with gated rear access. On the first floor are 2 double bedrooms, the spacious family bathroom and hatch access to loft storage.

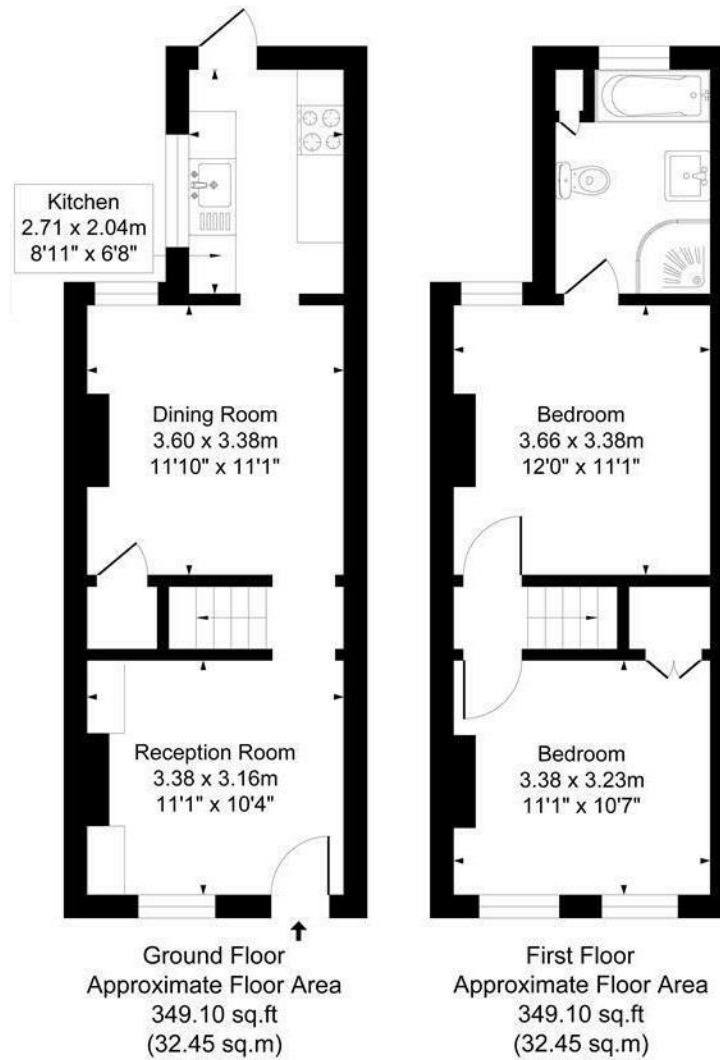
Located 0.3 miles from Archdeacon and TPA, 0.6 miles from Trafalgar Primary and St Richard Reynolds School and within 0.7 miles of Twickenham town centre, Church Street and Twickenham Riverside with a towpath walk along the Thames past Marble Hill Park to Richmond.

EPC Rating C

- Mid Terrace Victorian Home
- 2 Double Bedrooms and Upstairs Bathroom
- Immaculately Presented Throughout
- Potential to Loft Convert (stpp)
- 2 Living Rooms and Separate Kitchen
- 0.2 Miles from Twickenham Green
- 0.7 Miles from Strawberry Hill and Twickenham Stations



Norcutt Road



Approx. Gross Internal Floor Area
64.9 Sq M - 698 Sq Ft

a Websters Estate Agents 36 Broad Street, Teddington, Middlesex TW11 8QY

t 020 8614 6000

e sales@mywebsters.co.uk **w** mywebsters.co.uk

Disclaimer

These particulars, whilst believed to be accurate are set out as a general outline only for guidance and do not constitute any part of an offer or contract. Intending purchasers should not rely on them as statements of representation of fact, but must satisfy themselves by inspection or otherwise as to their accuracy. We have not carried out a detailed survey nor tested the services, appliances and specific fittings. Room sizes should not be relied upon for carpets and furnishings. The measurements given are approximate. No person in this firm's employment has the authority to make or give any representation or warranty in respect of the property.

